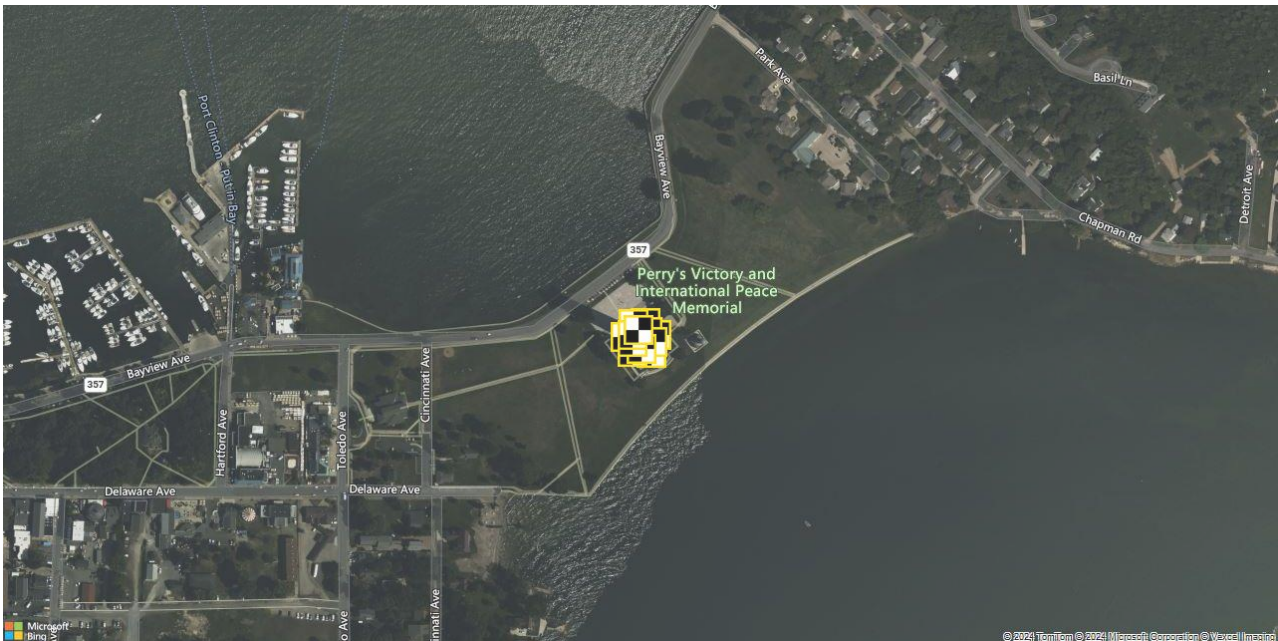
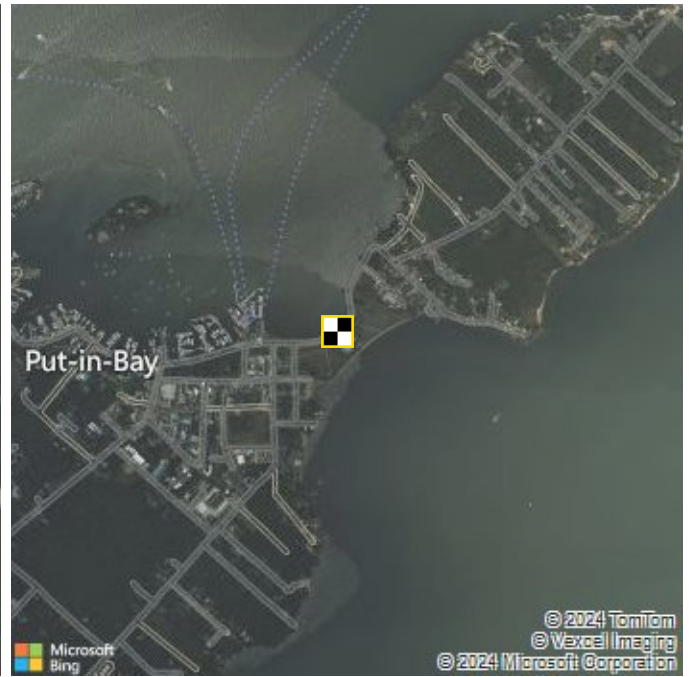


Ground Control Report Put-in-Bay, Ohio - 20240502 CORS



Survey ID as8262e0c7
Aeropoint Set
Date captured 02 May 2024 8:08 AM EDT
Points captured 12
Processing method Propeller network correction
Document generated 30 May 2024 11:55 AM EDT

Point 1



Point Number 1
Global ID ac9e2c956f
AeroPoint ID E1AE15F5

Capture start 02 May 2024 8:08 AM EDT
Capture end 02 May 2024 1:46 PM EDT
Duration 5:37
Uploaded 02 May 2024 4:17 PM EDT

NAD83(2011)

Latitude 41.65422952° (41° 39' 15.22626" N)
Longitude -82.81125562° (82° 48' 40.52025" W)
Ellipsoid height (NAD83(2011)) 143.074 m

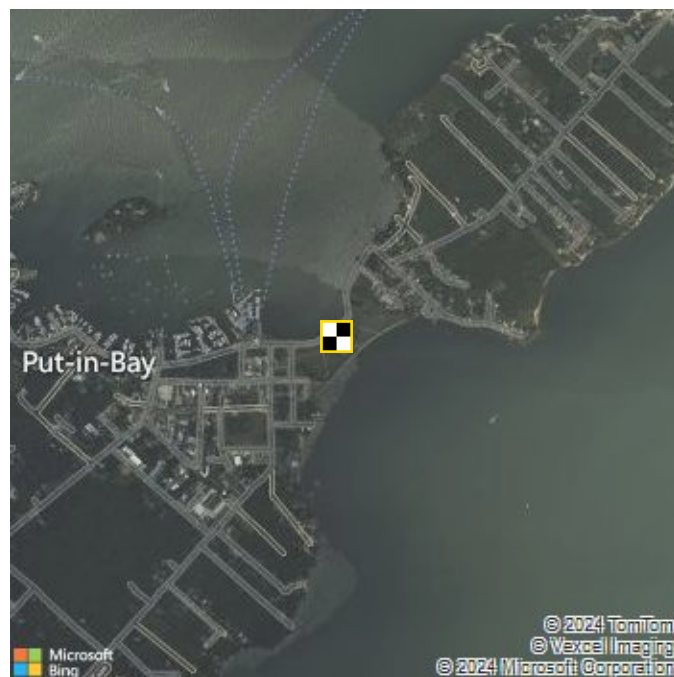
NAD83(2011) / UTM zone 17N

Northing 4612971.538 m
Easting 349183.825 m
Ellipsoid height 143.074 m

Quality

Data points 4053
Points used 4053 (100.0%)
Baseline distance 2.51 km
Data variance 5.0 mm / 4.0 mm / 8.8 mm

Point 2



Point Number 2
Global ID acbf3a967d
AeroPoint ID 9E3ED771

Capture start 02 May 2024 8:08 AM EDT
Capture end 02 May 2024 1:46 PM EDT
Duration 5:37
Uploaded 02 May 2024 4:17 PM EDT

NAD83(2011)

Latitude 41.65413807° (41° 39' 14.89705" N)
Longitude -82.81114273° (82° 48' 40.11384" W)
Ellipsoid height (NAD83(2011)) 143.025 m

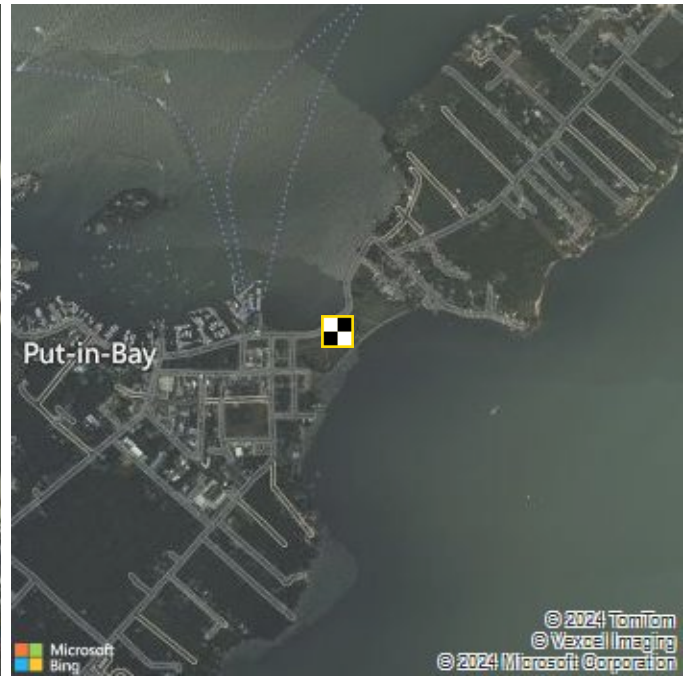
NAD83(2011) / UTM zone 17N

Northing 4612961.187 m
Easting 349193.012 m
Ellipsoid height 143.025 m

Quality

Data points 4051
Points used 4051 (100.0%)
Baseline distance 2.50 km
Data variance 3.0 mm / 4.4 mm / 14.6 mm

Point 3



Point Number 3
Global ID acc1fefc76
AeroPoint ID 6DCE4FEE

Capture start 02 May 2024 8:09 AM EDT
Capture end 02 May 2024 1:47 PM EDT
Duration 5:37
Uploaded 02 May 2024 4:27 PM EDT

NAD83(2011)

Latitude 41.65401057° (41° 39' 14.43807" N)
Longitude -82.81120468° (82° 48' 40.33686" W)
Ellipsoid height (NAD83(2011)) 143.036 m

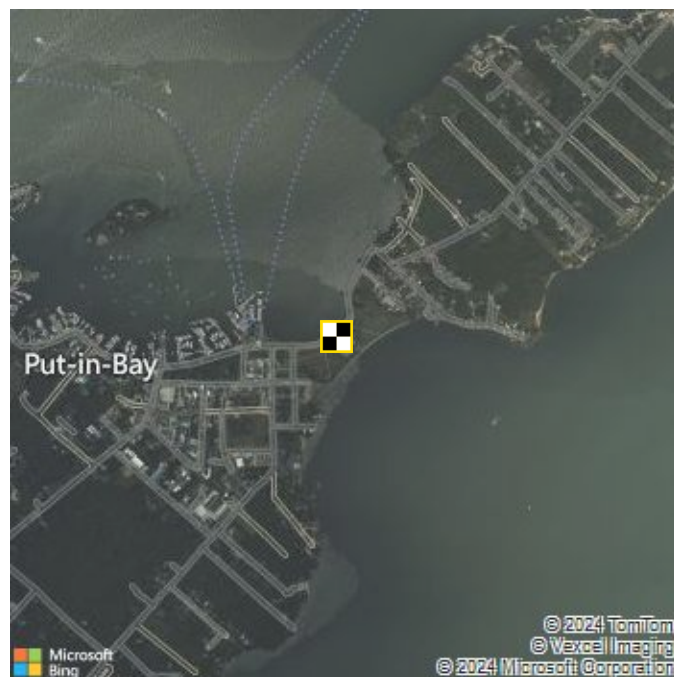
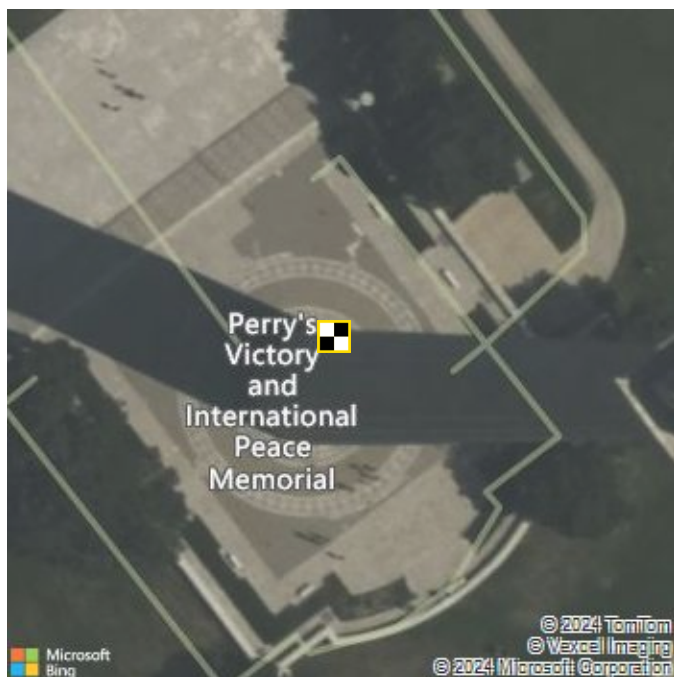
NAD83(2011) / UTM zone 17N

Northing 4612947.14 m
Easting 349187.556 m
Ellipsoid height 143.036 m

Quality

Data points 4052
Points used 4052 (100.0%)
Baseline distance 2.49 km
Data variance 3.0 mm / 6.8 mm / 5.9 mm

Point 4



Point Number 4
Global ID ac530187dd
AeroPoint ID E1E3DDD9

Capture start 02 May 2024 8:09 AM EDT
Capture end 02 May 2024 1:50 PM EDT
Duration 5:40
Uploaded 02 May 2024 4:52 PM EDT

NAD83(2011)

Latitude 41.65416539° (41° 39' 14.99540" N)
Longitude -82.81124078° (82° 48' 40.46679" W)
Ellipsoid height (NAD83(2011)) 143.09 m

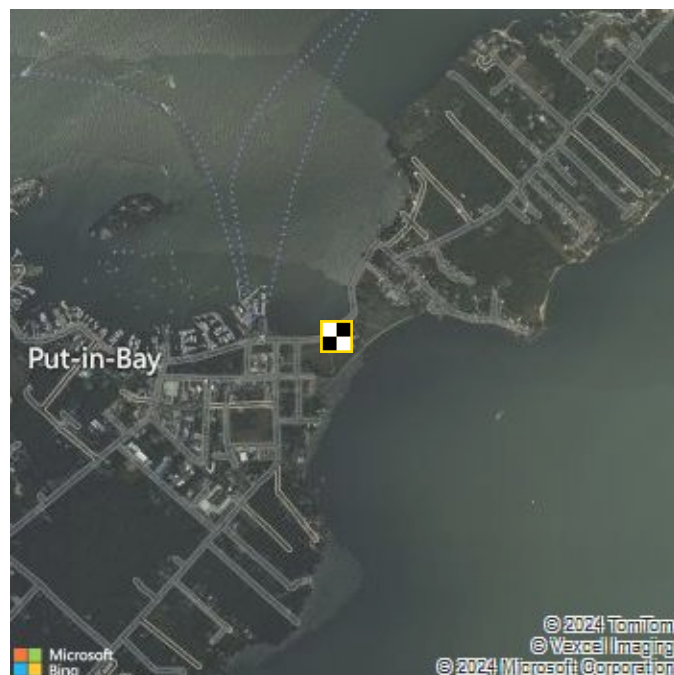
NAD83(2011) / UTM zone 17N

Northing 4612964.392 m
Easting 349184.912 m
Ellipsoid height 143.09 m

Quality

Data points 4089
Points used 4089 (100.0%)
Baseline distance 2.50 km
Data variance 6.2 mm / 4.9 mm / 7.5 mm

Point 5



Point Number 5
Global ID ac34f7bdc0
AeroPoint ID 2BA2A3FA

Capture start 02 May 2024 8:10 AM EDT
Capture end 02 May 2024 1:47 PM EDT
Duration 5:37
Uploaded 02 May 2024 4:23 PM EDT

NAD83(2011)

Latitude 41.65400898° (41° 39' 14.43231" N)
Longitude -82.81139948° (82° 48' 41.03814" W)
Ellipsoid height (NAD83(2011)) 143.032 m

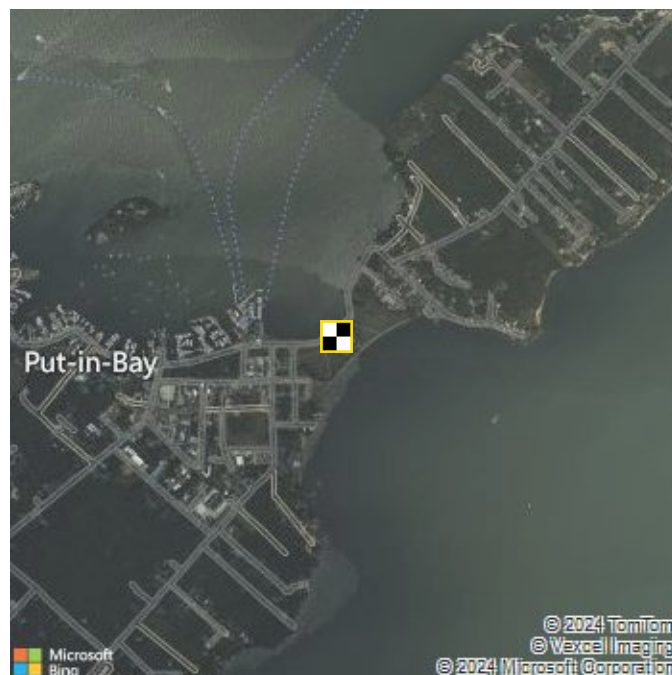
NAD83(2011) / UTM zone 17N

Northing 4612947.303 m
Easting 349171.331 m
Ellipsoid height 143.032 m

Quality

Data points 4048
Points used 4048 (100.0%)
Baseline distance 2.48 km
Data variance 6.2 mm / 5.7 mm / 8.4 mm

Point 6



Point Number 6
Global ID acdae992a2
AeroPoint ID 191B1DE6

Capture start 02 May 2024 8:10 AM EDT
Capture end 02 May 2024 1:51 PM EDT
Duration 5:40
Uploaded 02 May 2024 4:52 PM EDT

NAD83(2011)

Latitude 41.65409681° (41° 39' 14.74850" N)
Longitude -82.81120934° (82° 48' 40.35363" W)
Ellipsoid height (NAD83(2011)) 143.093 m

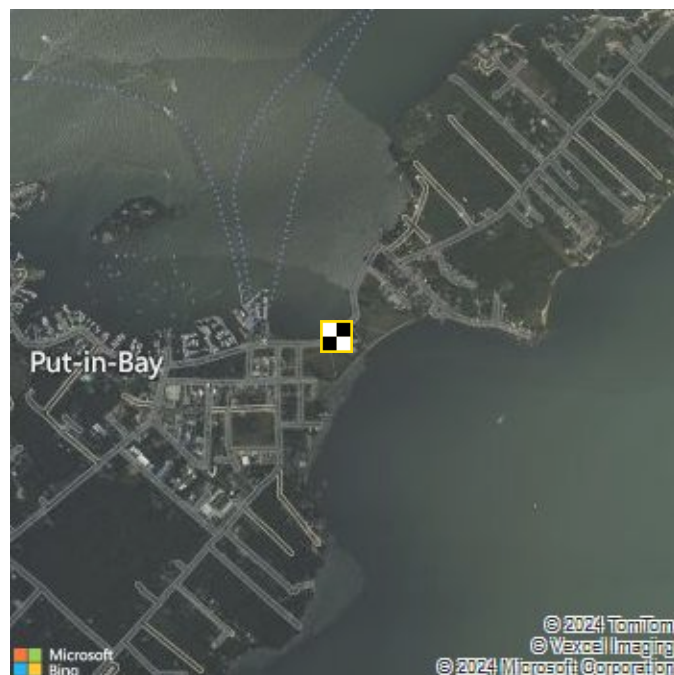
NAD83(2011) / UTM zone 17N

Northing 4612956.722 m
Easting 349187.369 m
Ellipsoid height 143.093 m

Quality

Data points 4085
Points used 4085 (100.0%)
Baseline distance 2.50 km
Data variance 5.0 mm / 10.2 mm / 6.3 mm

Point 7



Point Number 7
Global ID ac945d97dc
AeroPoint ID B99DABB4

Capture start 02 May 2024 8:11 AM EDT
Capture end 02 May 2024 1:48 PM EDT
Duration 5:37
Uploaded 02 May 2024 4:23 PM EDT

NAD83(2011)

Latitude 41.65412236° (41° 39' 14.84049" N)
Longitude -82.81147038° (82° 48' 41.29338" W)
Ellipsoid height (NAD83(2011)) 143.044 m

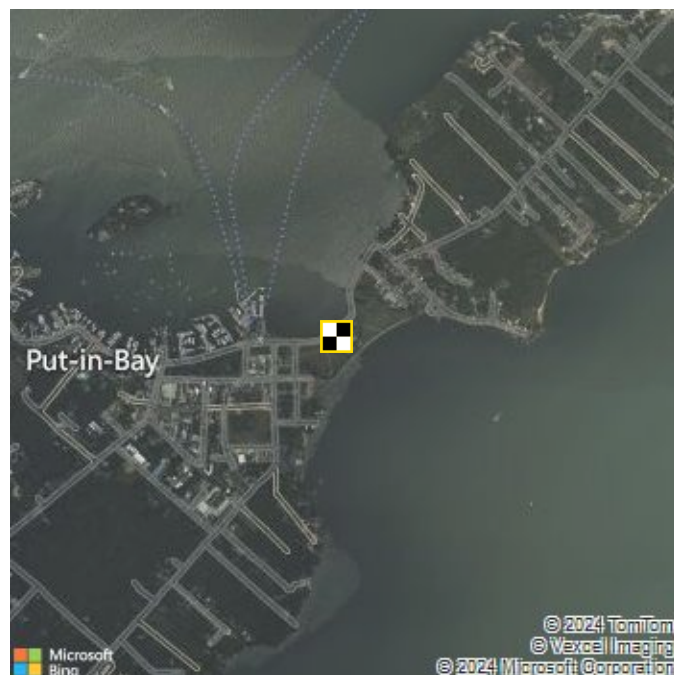
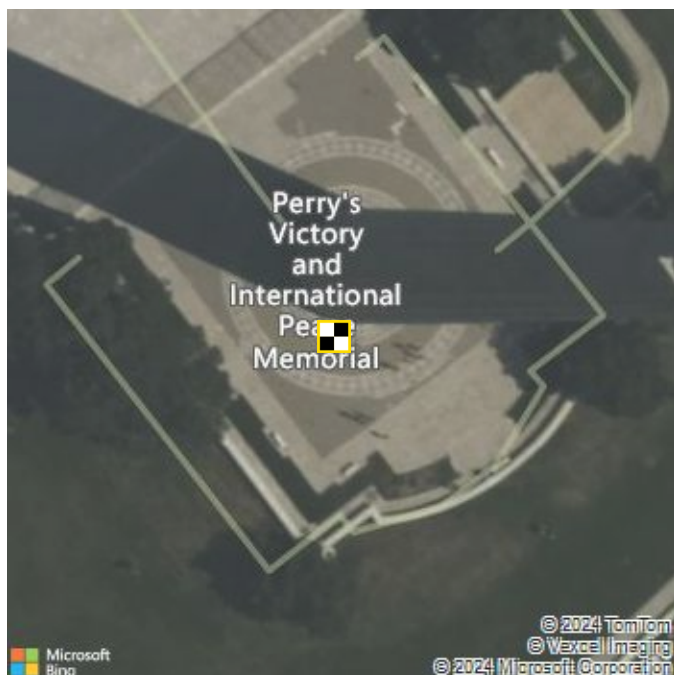
NAD83(2011) / UTM zone 17N

Northing 4612960.016 m
Easting 349165.692 m
Ellipsoid height 143.044 m

Quality

Data points 4047
Points used 4045 (100.0%)
Baseline distance 0.01 km
Data variance 8.3 mm / 6.2 mm / 8.7 mm

Point 8



Point Number 8
Global ID ac03f55662
AeroPoint ID 638CE531

Capture start 02 May 2024 8:11 AM EDT
Capture end 02 May 2024 1:51 PM EDT
Duration 5:40
Uploaded 02 May 2024 4:20 PM EDT

NAD83(2011)

Latitude 41.65403757° (41° 39' 14.53526" N)
Longitude -82.81130287° (82° 48' 40.69032" W)
Ellipsoid height (NAD83(2011)) 143.104 m

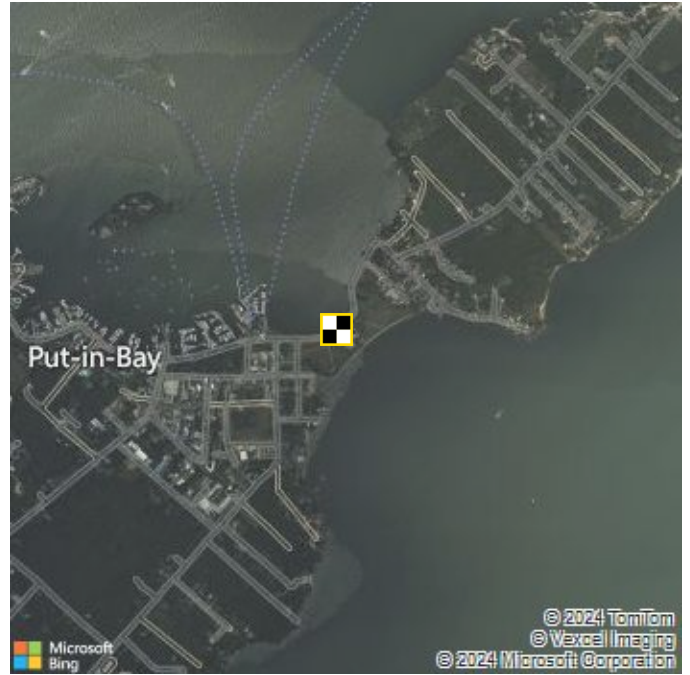
NAD83(2011) / UTM zone 17N

Northing 4612950.309 m
Easting 349179.443 m
Ellipsoid height 143.104 m

Quality

Data points 4082
Points used 4082 (100.0%)
Baseline distance 2.49 km
Data variance 8.6 mm / 9.4 mm / 12.8 mm

Point 9



Point Number 9
Global ID ac9828d85c
AeroPoint ID 6F2125A1

Capture start 02 May 2024 8:11 AM EDT
Capture end 02 May 2024 1:49 PM EDT
Duration 5:37
Uploaded 02 May 2024 4:43 PM EDT

NAD83(2011)

Latitude 41.65421738° (41° 39' 15.18258" N)
Longitude -82.81138959° (82° 48' 41.00254" W)
Ellipsoid height (NAD83(2011)) 143.038 m

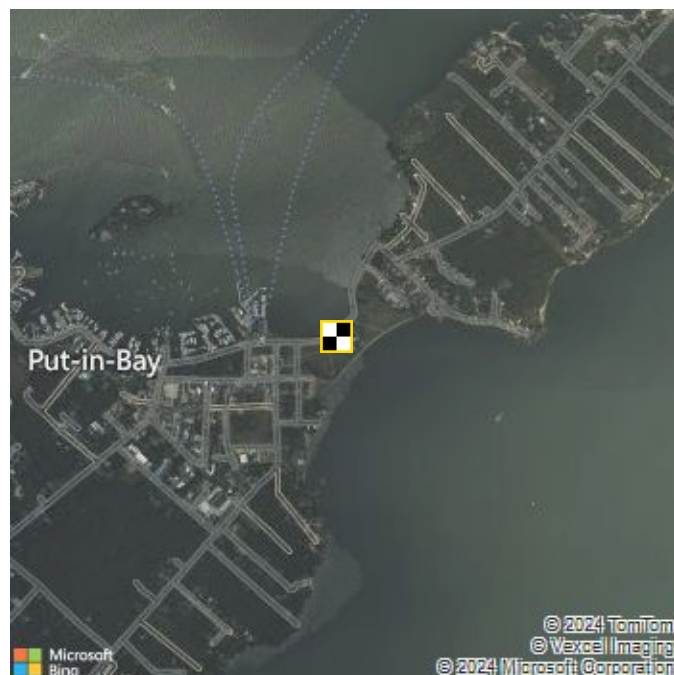
NAD83(2011) / UTM zone 17N

Northing 4612970.426 m
Easting 349172.641 m
Ellipsoid height 143.038 m

Quality

Data points 4046
Points used 4046 (100.0%)
Baseline distance 2.50 km
Data variance 4.4 mm / 3.5 mm / 7.8 mm

Point 10



Point Number 10
Global ID ac8e606134
AeroPoint ID D1C5E6BC

Capture start 02 May 2024 8:11 AM EDT
Capture end 02 May 2024 1:51 PM EDT
Duration 5:40
Uploaded 02 May 2024 4:13 PM EDT

NAD83(2011)

Latitude 41.65408715° (41° 39' 14.71374" N)
Longitude -82.81139646° (82° 48' 41.02726" W)
Ellipsoid height (NAD83(2011)) 143.083 m

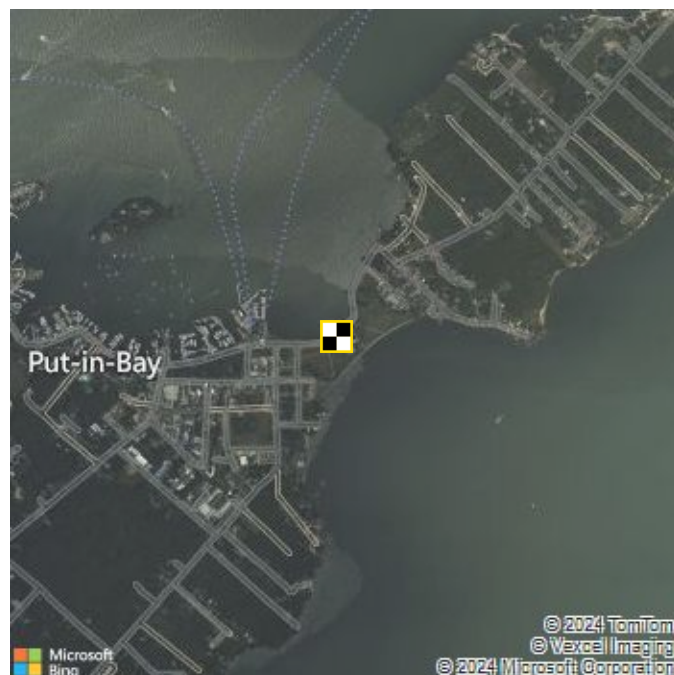
NAD83(2011) / UTM zone 17N

Northing 4612955.978 m
Easting 349171.766 m
Ellipsoid height 143.083 m

Quality

Data points 4080
Points used 4080 (100.0%)
Baseline distance 2.49 km
Data variance 3.8 mm / 10.9 mm / 10.6 mm

Point 11



Point Number 11
Global ID acbe6f674c
AeroPoint ID 36EEFFEA

Capture start 02 May 2024 8:12 AM EDT
Capture end 02 May 2024 1:52 PM EDT
Duration 5:39
Uploaded 02 May 2024 4:14 PM EDT

NAD83(2011)

Latitude 41.65413954° (41° 39' 14.90235" N)
Longitude -82.81139415° (82° 48' 41.01894" W)
Ellipsoid height (NAD83(2011)) 143.092 m

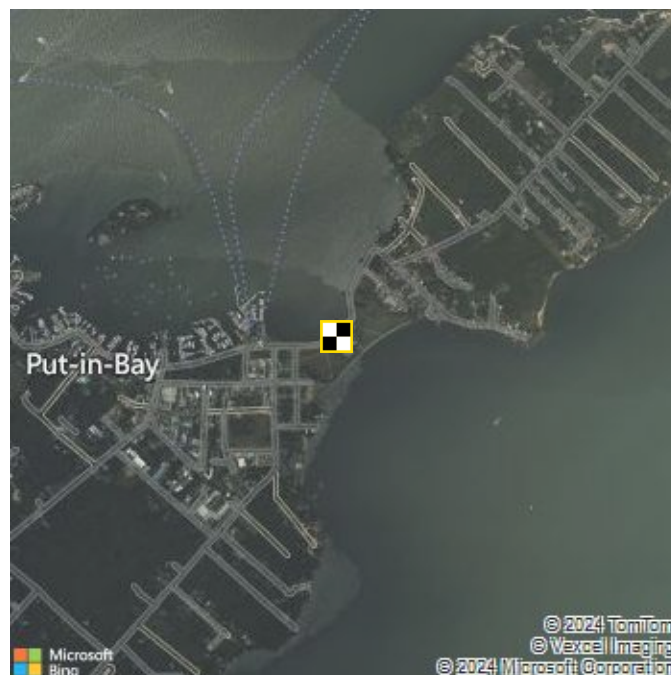
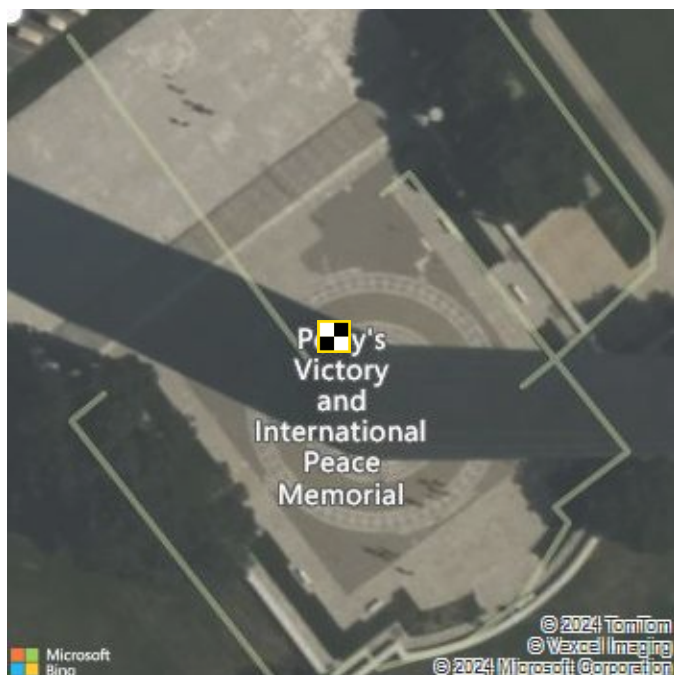
NAD83(2011) / UTM zone 17N

Northing 4612961.791 m
Easting 349172.08 m
Ellipsoid height 143.092 m

Quality

Data points 4075
Points used 4075 (100.0%)
Baseline distance 2.49 km
Data variance 5.3 mm / 10.6 mm / 5.5 mm

Point 12



Point Number 12
Global ID ac78b18438
AeroPoint ID 8D3CBEE6

Capture start 02 May 2024 8:13 AM EDT
Capture end 02 May 2024 1:52 PM EDT
Duration 5:39
Uploaded 02 May 2024 4:15 PM EDT

NAD83(2011)

Latitude 41.65418035° (41° 39' 15.04925" N)
Longitude -82.81133597° (82° 48' 40.80949" W)
Ellipsoid height
(NAD83(2011)) 143.092 m

NAD83(2011) / UTM zone 17N

Northing 4612966.219 m
Easting 349177.02 m
Ellipsoid height 143.092 m

Quality

Data points 4070
Points used 4070 (100.0%)
Baseline distance 2.50 km
Data variance 9.7 mm / 3.8 mm / 10.7 mm